

# 2025-2026 PRODUCT RANGE

## Animal Comfort Experts

[www.terrui.com](http://www.terrui.com)



**TERRUI**





## *Who we are:*

### *TERRUI INTERNATIONAL CO.,LTD.*

Terrui International Co., Ltd. was established in 2002 and specializes in the development, manufacturing, and sales of livestock equipment. Over the years, we have emerged as a leading global supplier of circulation fans, soaking systems, drinking waterers, calf hutches and pens, veterinary accessories, and electric fencing.

Since our inception, we have developed 200+ innovative products and secured 30+ patents. Committed to high product quality, we implemented a comprehensive quality management system, and our operations have been ISO 9001:2008 certified since 2013.

Our products are highly regarded worldwide, and we have successfully marketed them in over 120+ countries. Our mission is to enhance the health and comfort of livestock, contributing to better agricultural practices globally.





<b>1</b>	<b><i>Cooling and Soaking System</i></b>	<b>1-6</b>
	Cooling and Soaking System	1-6
<b>2</b>	<b><i>Livestock Fan</i></b>	<b>7-15</b>
	Circulation and Exhaust/Intake Fan	7-14
	Ceiling Fan	15-15
<b>3</b>	<b><i>Livestock Waterer</i></b>	<b>16-32</b>
	Water Trough	14-29
	Water Bowl	30-32
<b>4</b>	<b><i>Livestock House</i></b>	<b>33-36</b>
	Calf Hutch	33-35
	Calf Pen	36-36
<b>5</b>	<b><i>Veterinary Equipment</i></b>	<b>37-44</b>
	Veterinary Accessories	37-44
<b>6</b>	<b><i>Electric Fencing</i></b>	<b>42-97</b>
	Insulators	45-65
	Gate Handle	66-72
	Wire and Tape	73-78
	Strainer	79-81
	Post	82-88
	Toolings	89-97

# Livestock Waterers-Water Trough

## **WATERER 4000** **Covering**



- ◎6 individual spots for cows to drink,20cm(7.8")per dairy cow,10cm(4")per beef cow
- ◎Made from heavy-duty, impact resistant polyethylene. One shot Roto-molded process brings the trough more strength and long-life usage
- ◎Inside solid polyurethane foam insulation keeps waterer ice-free in cold weather, water cool in summer, with no energy costs
- ◎Offset feet make them easy to install. Rounded edge design protects animals from bruise
- ◎Sealed and automatically controlled high flow rate float valve always keep fresh water available,with 1" fitting
- ◎No screwing for fixing the cover
- ◎Adaptable heating system for extra choice

Part No#	Length cm/ft.	Width cm/ft.	Overall Height(cm/ft.)	Drinking Height(cm/ft.)	Capacity (l/gal)	Flow Rate (l/gal per min)	Braided Hose	Package
TPT401BLH	400/13.1	67/2.2	68/2.2	55/1.8	300/79	120/31	1"	1pc/Wrap

## **WATERER 4000** **Opening**



- ◎Free and large space for cow and beef to drink
- ◎Made from heavy-duty, impact resistant polyethylene. One shot Roto-molded process brings the trough more strength and long-life usage
- ◎Offset feet make them easy to install. Rounded edge design protects animals from bruise
- ◎Sealed and automatically controlled high flow rate float valve always keeps fresh water available,with 1" fitting
- ◎Easy to access, clean and maintain the waterer
- ◎Adaptable heating system for extra choice

Part No#	Length cm/ft.	Width cm/ft.	Overall Height(cm/ft.)	Drinking Height(cm/ft.)	Capacity (l/gal)	Flow Rate (l/gal per min)	Braided Hose	Package
TPT401BLHK	400/13.1	67/2.2	68/2.2	55/1.8	300/79	120/31	1"	1pc/Wrap

# Livestock Waterers-Water Trough

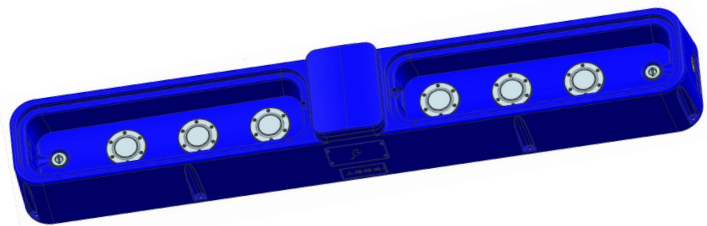
## **WATERER 4000** **Covering-1800W HEATED**



- ◎6 individual spots for cows to drink,20cm(7.8")per dairy cow,10cm(4")per beef cow
- ◎Made from heavy-duty, impact resistant polyethylene. One shot Roto-molded process brings the trough more strength and long-life usage
- ◎Inside solid polyurethane foam insulation keeps waterer ice-free in cold weather, water cool in summer, with no energy costs
- ◎Offset feet make them easy to install. Rounded edge design protects animals from bruise
- ◎Sealed and automatically controlled high flow rate float valve always keep fresh water available,with 1" fitting
- ◎No screwing for fixing the cover
- ◎1800W heating device in-built, heating control box system for extra choice,110-230V(DKX301DGK03)

Part No#	Length cm/ft.	Width cm/ft.	Overall Height(cm/ft.)	Drinking Height(cm/ft.)	Capacity (l/gal)	Flow Rate (l/gal per min)	Braided Hose	Package
TPT4038220BL HT	400/13.1	67/2.2	68/2.2	55/1.8	300/79	120/31	1"	1pc/Wrap

## **WATERER 4000** **Opening-1800W HEATED**



- ◎Free and large space for cow and beef to drink
- ◎Made from heavy-duty, impact resistant polyethylene. One shot Roto-molded process brings the trough more strength and long-life usage
- ◎Offset feet make them easy to install. Rounded edge design protects animals from bruise
- ◎Sealed and automatically controlled high flow rate float valve always keeps fresh water available,with 1" fitting
- ◎Easy to access, clean and maintain the waterer
- ◎Adaptable heating system for extra choice
- ◎1800W heating device in-built, heating control box system for extra choice,110-230V(DKX301DGK03)

Part No#	Length cm/ft.	Width cm/ft.	Overall Height(cm/ft.)	Drinking Height(cm/ft.)	Capacity (l/gal)	Flow Rate (l/gal per min)	Braided Hose	Package
TPT4038220BL KHT	400/13.1	67/2.2	68/2.2	55/1.8	300/79	120/31	1"	1pc/Wrap

# Livestock Waterers-Water Trough

## **WATERER 2250** **Covering**



- ◎3 individual spots for cows to drink,20cm(7.8")per dairy cow,10cm(4") per beef cow
- ◎Made from heavy-duty, impact resistant polyethylene. One shot Roto-molded process brings the trough more strength and long-life usage
- ◎Inside solid polyurethane foam insulation keeps waterer ice-free in cold weather, water cool in summer, with no energy costs
- ◎Offset feet make them easy to install. Rounded edge design protects animals from bruise
- ◎Sealed and automatically controlled high flow rate float valve always keeps fresh water available,with 1" fitting
- ◎No screwing for fixing the cover
- ◎Adaptable heating system for extra choice

Part No#	Length cm/ft.	Width cm/ft.	Overall Height(cm/ft.)	Drinking Height(cm/ft.)	Capacity (l/gal)	Flow Rate (l/gal per min)	Braided Hose	Package
TPT225BLH	225/7.4	67/2.2	68/2.2	55/1.8	140/37	120/31	1"	1pc/Wrap

## **WATERER 2250** **Opening**



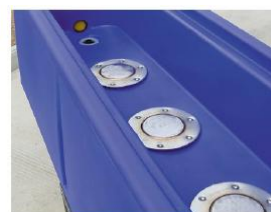
- ◎Free and large space for cow and beef to drink
- ◎Made from heavy-duty, impact resistant polyethylene. One shot Roto-molded process brings the trough more strength and long-life usage
- ◎Offset feet make them easy to install. Rounded edge design protects animals from bruise
- ◎Sealed and automatically controlled high flow rate float valve always keeps fresh water available,with 1" fitting
- ◎Easy to access, clean and maintain the waterer
- ◎Adaptable heating system for extra choice

Part No#	Length cm/ft.	Width cm/ft.	Overall Height(cm/ft.)	Drinking Height(cm/ft.)	Capacity (l/gal)	Flow Rate (l/gal per min)	Braided Hose	Package
TPT225BLHK	225/7.4	67/2.2	68/2.2	55/1.8	140/37	120/31	1"	1pc/Wrap



# Livestock Waterers-Water Trough

## **WATERER 2250** **Covering-600W HEATED**



- ◎3 individual spots for cows to drink,20cm(7.8")per dairy cow,10cm(4") per beef cow
- ◎Made from heavy-duty, impact resistant polyethylene. One shot Roto-molded process brings the trough more strength and long-life usage
- ◎Inside solid polyurethane foam insulation keeps waterer ice-free in cold weather, water cool in summer, with no energy costs
- ◎Offset feet make them easy to install. Rounded edge design protects animals from bruise
- ◎Sealed and automatically controlled high flow rate float valve always keeps fresh water available,with 1" fitting
- ◎No screwing for fixing the cover
- ◎600W heating device in-built, heating control box system for extra choice,110-230V(DKX301DGK03)

Part No#	Length cm/ft.	Width cm/ft.	Overall Height(cm/ft.)	Drinking Height(cm/ft.)	Capacity (l/gal)	Flow Rate (l/gal per min)	Braided Hose	Package
TPT22530220B LHT600	225/7.4	67/2.2	68/2.2	55/1.8	140/37	120/31	1"	1pc/Wrap

## **WATERER 2250** **Opening-600W HEATED**

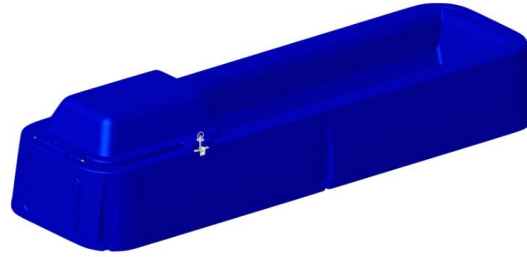


- ◎Free and large space for cow and beef to drink
- ◎Made from heavy-duty, impact resistant polyethylene. One shot Roto-molded process brings the trough more strength and long-life usage
- ◎Offset feet make them easy to install. Rounded edge design protects animals from bruise
- ◎Sealed and automatically controlled high flow rate float valve always keeps fresh water available,with 1" fitting
- ◎Easy to access, clean and maintain the waterer
- ◎600W heating device in-built, heating control box system for extra choice,110-230V(DKX301DGK03)

Part No#	Length cm/ft.	Width cm/ft.	Overall Height(cm/ft.)	Drinking Height(cm/ft.)	Capacity (l/gal)	Flow Rate (l/gal per min)	Braided Hose	Package
TPT22530220B LKHT600	225/7.4	67/2.2	68/2.2	55/1.8	140/37	120/31	1"	1pc/Wrap

# Livestock Waterers-Water Trough

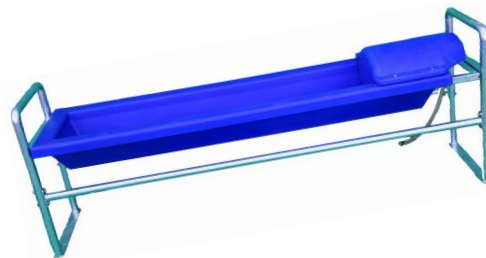
## **WATERER 2250** **Opening 2.0**



- ◎Free and large space for cow and beef to drink
- ◎Made from heavy-duty, impact resistant polyethylene. One shot Roto-molded process brings the trough more strength and long-life usage
- ◎Offset feet make them easy to install. Rounded edge design protects animals from bruise
- ◎Sealed and automatically controlled high flow rate float valve always keeps fresh water available,with 1" fitting
- ◎Easy to access,clean and maintain the waterer
- ◎Adaptable heating system for extra choice

Part No#	Length cm/ft.	Width cm/ft.	Overall Height(cm/ft.)	Drinking Height(cm/ft.)	Capacity (l/gal)	Flow Rate (l/gal per min)	Braided Hose	Package
TPT22610BL	225/7.4	67/2.2	53/1.7	55/1.8	120/31	120/31	1"	1pc/Wrap

## **WATERER 2600** **Rotatable Opening**



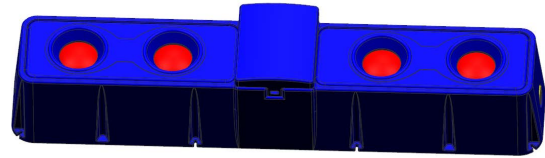
- ◎Made from heavy-duty, impact resistant polyethylene. One shot Roto-molded process brings the trough more strength and long-life usage
- ◎90° rotatable, easy to clean
- ◎Hot dip galvanised steel frame work with high strength
- ◎Sealed and automatically controlled high flow rate float valve always keeps fresh water,with 1" fitting
- ◎Innovated design for easy and safe rotation

Part No#	Length cm/ft.	Width cm/ft.	Overall Height(cm/ft.)	Drinking Height(cm/ft.)	Capacity (l/gal)	Flow Rate (l/gal per min)	Braided Hose	Package
TPT260BLT	260/8.5	59/1.9	99/3	75/2.46	140/37	120/31	1"	packing seperately



# Livestock Waterers-Water Trough

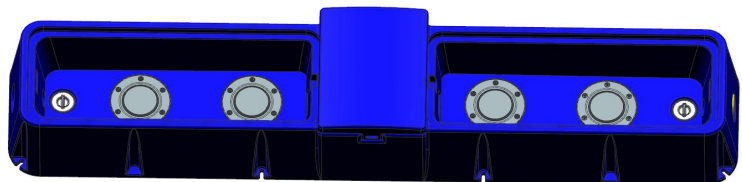
## **WATERER 2800** **Covering-1200W HEATED**



- ◎Free and large space for cow and beef to drink
- ◎Made from heavy-duty, impact resistant polyethylene. One shot Roto-molded process brings the trough more strength and long-life usage
- ◎Offset feet make them easy to install. Rounded edge design protects animals from bruise
- ◎Sealed and automatically controlled high flow rate float valve always keeps fresh water available,with 1" fitting
- ◎Easy to access, clean and maintain the waterer
- ◎1200W heating device in-built, heating control box system for extra choice, 110-230V(DKX301DGK03)

Part No#	Length cm/ft.	Width cm/ft.	Overall Height(cm/ft.)	Drinking Height(cm/ft.)	Capacity (l/gal)	Flow Rate (l/gal per min)	Braided Hose	Package
TPT2826BLYT HT1200	280/9.1	56/2.2	55/1.8	44/1.4	150/39	120/31	1"	1pc/Wrap

## **WATERER 2800** **Opening-1200W HEATED**

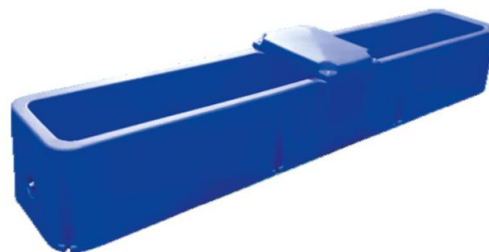


- ◎Free and large space for cow and beef to drink
- ◎Made from heavy-duty, impact resistant polyethylene. One shot Roto-molded process brings the trough more strength and long-life usage
- ◎Offset feet make them easy to install. Rounded edge design protects animals from bruise
- ◎Sealed and automatically controlled high flow rate float valve always keeps fresh water available,with 1" fitting
- ◎Easy to access, clean and maintain the waterer
- ◎1200W heating device in-built, heating control box system for extra choice, 110-230V(DKX301DGK03)

Part No#	Length cm/ft.	Width cm/ft.	Overall Height(cm/ft.)	Drinking Height(cm/ft.)	Capacity (l/gal)	Flow Rate (l/gal per min)	Braided Hose	Package
TPT2826BLYT KHT1200	280/9.1	56/2.2	55/1.8	44/1.4	150/39	120/31	1"	1pc/Wrap

# Livestock Waterers-Water Trough

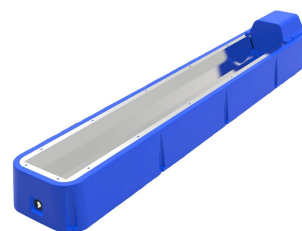
## **WATERER 2800** **Opening**



- ◎Free and large space for cow and beef to drink
- ◎Made from heavy-duty, impact resistant polyethylene. One shot Roto-molded process brings the trough more strength and long-life usage
- ◎Offset feet make them easy to install. Rounded edge design protects animals from bruise
- ◎Sealed and automatically controlled high flow rate float valve always keeps fresh water available,with 1" fitting
- ◎Easy to access, clean and maintain the waterer
- ◎Adaptable heating system for extra choice

Part No#	Length cm/ft.	Width cm/ft.	Overall Height(cm/ft.)	Drinking Height(cm/ft.)	Capacity (l/gal)	Flow Rate (l/gal per min)	Braided Hose	Package
TPT280BLKYT	280/9.1	56/2.2	55/1.8	44/1.4	150/39	120/31	1"	1pc/Wrap

## **WATERER 3300** **Opening Stainless Panel**

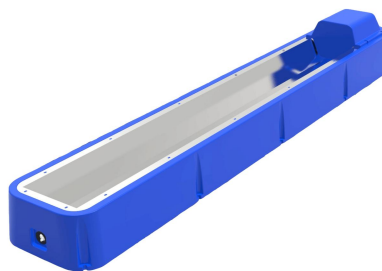


- ◎Large stainless panel for easy access to heating system which is directly located under the stainless trough
- ◎Free and large space for cows to drink
- ◎Made from heavy-duty, impact resistant polyethylene. One shot Roto-molded process brings the trough more strength and long-life usage
- ◎Easy to access, clean and maintain the waterer. Rounded edge design protects animals from bruise
- ◎Sealed and automatically controlled high flow rate float valve always keeps fresh water available, with 1" fitting
- ◎1200W heating apparatus for extra choice (heating system on the bottom of the stainless panel)
- ◎Much safer than putting the heating apparatus into the drinking water
- ◎Separating the heating apparatus from water makes it much safer than putting it into the drinking water

Part No#	Length cm/ft.	Width cm/ft.	Overall Height(cm/ft.)	Drinking Height(cm/ft.)	Capacity (l/gal)	Flow Rate (l/gal per min)	Braided Hose	Package
TPT33220SS	330/9.9	67/2.2	53/1.7	35/1.15	200/52	120/31	1"	1pc/Wrap

# Livestock Waterers-Water Trough

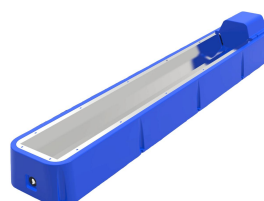
## **WATERER 4000** **Opening Stainless Panel**



- ◎Large stainless panel for easy access to heating system which is directly located under the stainless trough
- ◎Free and large space for cows to drink
- ◎Made from heavy-duty, impact resistant polyethylene. One shot Roto-molded process brings the trough more strength and long-life usage
- ◎Easy to access, clean and maintain the waterer. Rounded edge design protects animals from bruise
- ◎Sealed and automatically controlled high flow rate float valve always keeps fresh water available, with 1" fitting
- ◎1800W heating apparatus for extra choice (heating system on the bottom of the stainless panel)
- ◎Much safer than putting the heating apparatus into the drinking water
- ◎Separating the heating apparatus from water makes it much safer than putting it into the drinking water

Part No#	Length cm/ft.	Width cm/ft.	Overall Height(cm/ft.)	Drinking Height(cm/ft.)	Capacity (l/gal)	Flow Rate (l/gal per min)	Braided Hose	Package
TPT4026220SS	402/13.1	67/2.2	53/1.7	35/1.15	260/68	120/31	1"	1pc/Wrap

## **WATERER 2250** **Opening Stainless Panel**



- ◎Large stainless panel for easy access to heating system which is directly located under the stainless trough
- ◎Free and large space for cows to drink
- ◎Made from heavy-duty, impact resistant polyethylene. One shot Roto-molded process brings the trough more strength and long-life usage
- ◎Easy to access, clean and maintain the waterer. Rounded edge design protects animals from bruise
- ◎Sealed and automatically controlled high flow rate float valve always keeps fresh water available, with 1" fitting
- ◎600W heating apparatus for extra choice (heating system on the bottom of the stainless panel)
- ◎Much safer than putting the heating apparatus into the drinking water
- ◎Separating the heating apparatus from water makes it much safer than putting it into the drinking water

Part No#	Length cm/ft.	Width cm/ft.	Overall Height(cm/ft.)	Drinking Height(cm/ft.)	Capacity (l/gal)	Flow Rate (l/gal per min)	Braided Hose	Package
TPT2026220SS	225/7.4	67/2.2	53/1.7	35/1.15	120/31	120/31	1"	1pc/Wrap

# Livestock Waterers-Water Trough

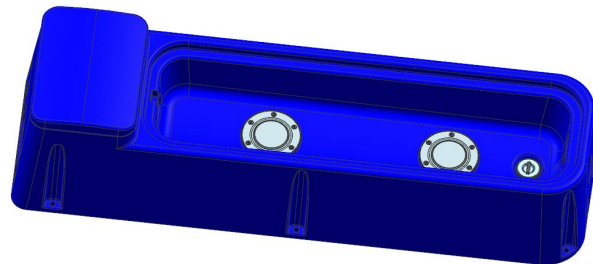
## **WATERER 1700S** **Covering-600W HEATED**



- ◎4 individual spots for sheep,calf and even heifer to drink
- ◎Made from heavy-duty, impact resistant polyethylene. One shot Roto-molded process brings the trough more strength and long-life usage
- ◎Inside solid polyurethane foam insulation keeps waterer ice-free in cold weather, water cool in summer, with no energy costs
- ◎Offset feet make them easy to install. Rounded edge design protects animal from bruise
- ◎Sealed and automatically controlled high flow rate float valve always keeps fresh water available,with 1/2" fitting
- ◎600W heating device in-built, heating control box system for extra choice,110-230V(DKX301DGK03)

Part No#	Length cm/ft.	Width cm/ft.	Overall Height(cm/ft.)	Drinking Height(cm/ft.)	Capacity (l/gal)	Flow Rate (l/gal per min)	Braided Hose	Package
TPT1735220BL HT600	170/5.1	57/1.71	50/1.5	30/1	60/15.8	40/10	1/2"	1pc/Carton

## **WATERER 1700S** **Opening-600W HEATED**



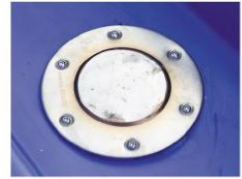
- ◎4 individual spots for sheep,calf and even heifer to drink
- ◎Made from heavy-duty, impact resistant polyethylene. One shot Roto-molded process brings the trough more strength and long-life usage
- ◎Inside solid polyurethane foam insulation keeps waterer ice-free in cold weather, water cool in summer, with no energy costs
- ◎Offset feet make them easy to install. Rounded edge design protects animal from bruise
- ◎Sealed and automatically controlled high flow rate float valve always keeps fresh water available,with 1/2" fitting
- ◎600W heating device in-built, heating control box system for extra choice,110-230V(DKX301DGK03)

Part No#	Length cm/ft.	Width cm/ft.	Overall Height(cm/ft.)	Drinking Height(cm/ft.)	Capacity (l/gal)	Flow Rate (l/gal per min)	Braided Hose	Package
TPT1735220BL KHT600	170/5.1	57/1.71	50/1.5	30/1	60/15.8	40/10	1/2"	1pc/Carton



# Livestock Waterers-Water Trough

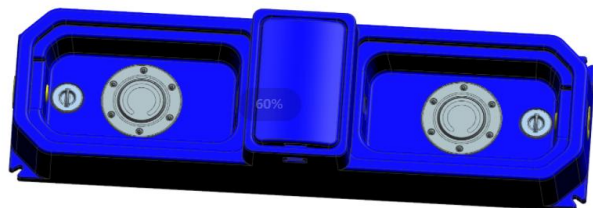
## **WATERER 1700D** **Covering-600W HEATED**



- ◎4 individual spots for sheep,calf and even heifer to drink
- ◎Made from heavy-duty, impact resistant polyethylene. One shot Roto-molded process brings the trough more strength and long-life usage
- ◎Inside solid polyurethane foam insulation keeps waterer ice-free in cold weather, water cool in summer, with no energy costs
- ◎Offset feet make them easy to install. Rounded edge design protects animal from bruise
- ◎Sealed and automatically controlled high flow rate float valve always keeps fresh water available,with 1/2" fitting
- ◎600W heating device in-built, heating control box system for extra choice,110-230V(DKX301DGK03)

Part No#	Length cm/ft.	Width cm/ft.	Overall Height(cm/ft.)	Drinking Height(cm/ft.)	Capacity (l/gal)	Flow Rate (l/gal per min)	Braided Hose	Package
TPT1735220BL HT600M	170/5.1	57/1.71	50/1.5	30/1	60/15.8	40/10	1/2"	1pc/Carton

## **WATERER 1700D** **Opening-600W HEATED**



- ◎4 individual spots for sheep,calf and even heifer to drink
- ◎Made from heavy-duty, impact resistant polyethylene. One shot Roto-molded process brings the trough more strength and long-life usage
- ◎Inside solid polyurethane foam insulation keeps waterer ice-free in cold weather, water cool in summer, with no energy costs
- ◎Offset feet make them easy to install. Rounded edge design protects animal from bruise
- ◎Sealed and automatically controlled high flow rate float valve always keeps fresh water available,with 1/2" fitting
- ◎600W heating device in-built, heating control box system for extra choice,110-230V(DKX301DGK03)

Part No#	Length cm/ft.	Width cm/ft.	Overall Height(cm/ft.)	Drinking Height(cm/ft.)	Capacity (l/gal)	Flow Rate (l/gal per min)	Braided Hose	Package
TPT1735220BL KHT600M	170/5.1	57/1.71	50/1.5	30/1	60/15.8	40/10	1/2"	1pc/Carton

# Livestock Waterers-Water Trough

## **WATERER 1700** **Covering**



- ◎4 individual spots for sheep,calf and even heifer to drink
- ◎Made from heavy-duty, impact resistant polyethylene. One shot Roto-molded process brings the trough more strength and long-life usage
- ◎Inside solid polyurethane foam insulation keeps waterer ice-free in cold weather, water cool in summer, with no energy costs
- ◎Offset feet make them easy to install. Rounded edge design protects animal from bruise
- ◎Sealed and automatically controlled high flow rate float valve always keeps fresh water available,with 1/2" fitting
- ◎Adaptable heating system for extra choice
- ◎Without covers and balls model can also be available(TPT170BLKYBS)

Part No#	Length cm/ft.	Width cm/ft.	Overall Height(cm/ft.)	Drinking Height(cm/ft.)	Capacity (l/gal)	Flow Rate (l/gal per min)	Braided Hose	Package
TPT170BLYBS	170/5.1	57/1.71	50/1.5	30/1	60/15.8	40/10	1/2"	1pc/Carton

## **WATERER 1130** **Covering**



- ◎2 individual spots for sheep,calf and even heifer to drink
- ◎Made from heavy-duty, impact resistant polyethylene. One shot Roto-molded process brings the trough more strength and long-life usage
- ◎Inside solid polyurethane foam insulation keeps waterer ice-free in cold weather, water cool in summer, with no energy costs
- ◎Offset feet make them easy to install. Rounded edge design protects animal from bruise
- ◎Sealed and automatically controlled high flow rate float valve always keeps fresh water available,with 1/2" fitting
- ◎Adaptable heating system for extra choice
- ◎Without covers and balls model can also be available(TPT11325BLK)

Part No#	Length cm/ft.	Width cm/ft.	Overall Height(cm/ft.)	Drinking Height(cm/ft.)	Capacity (l/gal)	Flow Rate (l/gal per min)	Braided Hose	Package
TPT11325BL	113/3.7	49/1.6	45/1.47	30/1"	26/6.8	40/10	1/2"	1pc/Carton

## **WATERER 1130**

### **Covering-300W HEATED**



- ◎2 individual spots for sheep,calf and even heifer to drink
- ◎Made from heavy-duty, impact resistant polyethylene. One shot Roto-molded process brings the trough more strength and long-life usage
- ◎Inside solid polyurethane foam insulation keeps waterer ice-free in cold weather, water cool in summer, with no energy costs
- ◎Offset feet make them easy to install. Rounded edge design protects animal from bruise
- ◎Sealed and automatically controlled high flow rate float valve always keeps fresh water available,with 1/2" fitting
- ◎300W heating device in-built, heating control box system for extra choice,110-230V(DKX301DGK03)
- ◎Without covers and balls model can also be available(TPT11330220BLKHT600)

Part No#	Length cm/ft.	Width cm/ft.	Overall Height(cm/ft.)	Drinking Height(cm/ft.)	Capacity (l/gal)	Flow Rate (l/gal per min)	Braided Hose	Package
TPT11330220B LHT600	113/3.7	49/1.6	45/1.47	30/1"	26/6.8	40/10	1/2"	1pc/Carton

## **WATERER 88**

### **Covering-300W HEATED**



- ◎2 individual spots for cows to drink
- ◎Made from heavy-duty, impact resistant polyethylene. One shot Roto-molded process brings the trough more strength and long-life usage
- ◎Inside solid polyurethane foam insulation keeps waterer ice-free in cold weather, water cool in summer, with no energy costs
- ◎Offset feet make them easy to install. Rounded edge design protects animals from bruise
- ◎Sealed and automatically controlled high flow rate float valve always keeps fresh water available,with 3/4" fitting
- ◎300W heating device in-built, heating control box system for extra choice,110-230V(DKX301DGK03)
- ◎Heating control system in-built model(TSM08830220BLHT300)

Part No#	Length cm/ft.	Width cm/ft.	Overall Height(cm/ft.)	Drinking Height(cm/ft.)	Capacity (l/gal)	Flow Rate (l/gal per min)	Braided Hose	Package
TSM08830220B LHT300A	110/3.6	70/2.3	53/1.7	45/1.47	85/22	50/13	3/4"	1pc/Carton

# Livestock Waterers-Water Trough

## **WATERER 88** **Covering**



- ◎2 individual spots for cows to drink
- ◎Made from heavy-duty, impact resistant polyethylene. One shot Roto-molded process brings the trough more strength and long-life usage
- ◎Inside solid polyurethane foam insulation keeps waterer ice-free in cold weather, water cool in summer, with no energy costs
- ◎Offset feet make them easy to install. Rounded edge design protects animals from bruise
- ◎Sealed and automatically controlled high flow rate float valve always keeps fresh water available,with 3/4" fitting
- ◎Adaptable heating system for extra choice

Part No#	Length cm/ft.	Width cm/ft.	Overall Height(cm/ft.)	Drinking Height(cm/ft.)	Capacity (l/gal)	Flow Rate (l/gal per min)	Braided Hose	Package
TPT088BL	110/3.6	70/2.3	53/1.7	45/1.47	85/22	50/13	3/4"	1pc/Carton

## **WATERER 40** **Covering**



- ◎Single spot for cow to drink
- ◎Made from heavy-duty, impact resistant polyethylene. One shot Roto-molded process brings the trough more strength and long-life usage
- ◎Inside solid polyurethane foam insulation keeps waterer ice-free in cold weather, water cool in summer, with no energy costs
- ◎Offset feet make them easy to install. Rounded edge design protects animals from bruise
- ◎Sealed and automatically controlled high flow rate float valve always keeps fresh water available,with 3/4" fitting
- ◎Adaptable heating system for extra choice

Part No#	Length cm/in	Width cm/in	Overall Height(cm/in)	Drinking Height(cm/in)	Capacity (l/gal)	Flow Rate (l/gal per min)	Braided Hose	Package
TPT040BL	70/2.3	60/1.97	52/1.7	45/1.47	40/10	50/13	3/4"	1pc/Carton



# Livestock Waterers-Water Bowl

## WATER BOWL PLASTIC-L



- ◎ Suitable for dairy or beef cow
- ◎ Made from heavy-duty, impact resistant polyethylene. One shot Roto-molded process brings the trough more strength and long-life usage
- ◎ Sealed and automatically controlled high flow rate float valve always keeps fresh water available
- ◎ Easy for installation and cleaning

Part No#	Length cm/in	Width cm/in	Overall Height(cm/in)	Connecting Fitting	Capacity (l/gal)	Flow Rate (l/gal per min)	Net Weight (kg/lbs)	Package
TRW405DB LM	40/16"	29.7/12"	28/11"	1/2"	9.3/2.5	6/2	2.7/5.9	2pcs/Carton

## WATER BOWL PLASTIC-S



- ◎ Suitable for dairy or beef cow
- ◎ Made from heavy-duty, impact resistant polyethylene. One shot Roto-molded process brings the trough more strength and long-life usage
- ◎ Sealed and automatically controlled high flow rate float valve always keeps fresh water available
- ◎ Easy for installation and cleaning

Part No#	Length cm/in	Width cm/in	Overall Height(cm/in)	Connecting Fitting	Capacity (l/gal)	Flow Rate (l/gal per min)	Net Weight (kg/lbs)	Package
TRW305DB LM	30/12"	22.5/9"	23.5/9"	1/2"	4/1	6/2	1.5/2.3	4pcs/Carton

# Livestock Waterers-Water Bowl

## **WATER BOWL PUSH PADDLE-L**



- ◎ Suitable for dairy or beef cow
- ◎ Made from heavy duty casting iron with enamel coating
- ◎ Stainless steel push paddle
- ◎ Smooth finish, rounded edges and flip-up paddle provide safety and comfort for the animal
- ◎ Easy for installation and cleaning

Part No#	Length cm/in	Width cm/in	Overall Height(cm/in)	Connecting Fitting	Capacity (l/gal)	Flow Rate (l/gal per min)	Net Weight (kg/lbs)	Package
TRW018	27/11"	25/10"	20.5/8"	1/2"	2.7/0.7	15/4	5.2/11.4	2pcs/Carton

## **WATER BOWL PUSH PADDLE-S**



- ◎ Suitable for dairy or beef cow
- ◎ Made from heavy duty casting iron with enamel coating
- ◎ Stainless steel push paddle
- ◎ Smooth finish, rounded edges and flip-up paddle provide safety and comfort for the animal
- ◎ Easy for installation and cleaning

Part No#	Length cm/in	Width cm/in	Overall Height(cm/in)	Connecting Fitting	Capacity (l/gal)	Flow Rate (l/gal per min)	Net Weight (kg/lbs)	Package
TRW017	25/10"	21/8"	17/7"	1/2"	1.7/0.45	15/4	4.7/10.3	2pcs/Carton

# Livestock Waterers-Water Bowl

## WATER BOWL STAINLESS



- ◎ Suitable for dairy or beef cow
- ◎ Made from 304 stainless steel
- ◎ Stainless steel push paddle
- ◎ Sealed and automatically controlled high flow rate float valve always keeps fresh water available
- ◎ Easy for installation and cleaning

Part No#	Length cm/in	Width cm/in	Overall Height(cm/in)	Connecting Fitting	Capacity (l/gal)	Flow Rate (l/gal per min)	Net Weight (kg/lbs)	Package
TRW400SS	30/12"	22.5/9"	23.5/9"	1/2"	4/1	6/2	1.4/3	20pcs/Carton

## WATER BOWL PLASTIC-G



- ◎ Suitable for dairy or beef cow
- ◎ Made from heavy-duty, impact resistant polypropylene. One shot injection process brings the trough more strength and long-life usage
- ◎ With deep of trough easy for drinking
- ◎ Easy for installation and cleaning

Part No#	Length cm/in	Width cm/in	Overall Height(cm/in)	Connecting Fitting	Capacity (l/gal)	Flow Rate (l/gal per min)	Net Weight (kg/lbs)	Package
TRW326G	25/10"	21/8"	17/7"	1/2"	2.6/0.68	15/4	1.2/2.6	6pcs/Carton